



KONICA MINOLTA

# bizhub c200

Colour Printer • Colour Copier • Scanner • Fax • E-mail

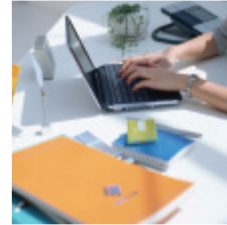
We've made colour more common.



A4 Monochrome **20** pages/min  
A4 Full Color **20** pages/min

Model shown with options.

The essentials of imaging



# Make colour fit your company and your costs.

To ensure that the use of colour documents and presentations isn't only for large companies, Konica Minolta created the compact, easy-to-use and surprisingly affordable bizhub C200. As everyone knows, colour makes your presentations and proposals more convincing. And, this compact machine boasts excellent colour image quality. It also reaches copy and print speeds of 20 pages per minute in both black & white and colour, to make sure your documents are ready when you need them. Whether you're copying, printing, scanning or faxing, the C200 promises to be just the right fit for you, your office and your company's success.



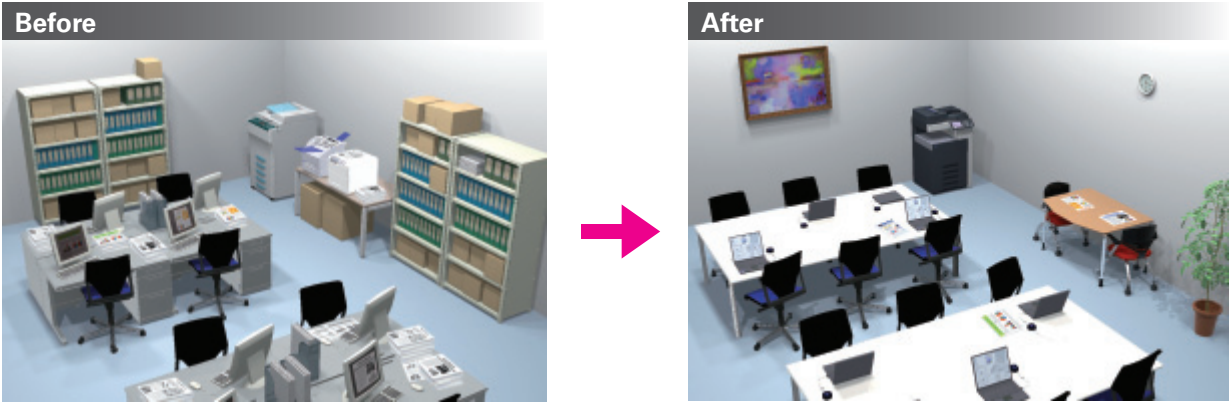
**bizhub**   
**C200**

*Model shown with options.*



# Make your office more efficient.

The multifunctional bizhub C200 helps small offices like yours become more efficient and more friendly places to work. This all-in-one machine lets you streamline your office by allowing you to relocate print, copy, scan and fax functions to one convenient site. By utilising the C200's scanner you can also free up valuable floor space by converting hard documents into digital files. Financially, the C200 allows you to lower your total cost of ownership (TCO) by getting rid of your black & white copier, colour printer, scanner and fax and replacing them with one efficient machine capable of taking on the work of all those devices. The C200's Internet and IP Address Fax features will also help you reduce communication costs. And, the bizhub's exceptional energy efficiency will cut utility costs. Finally, the C200's ultra-quiet operation also helps create a less noisy, and more friendly work environment.



### All-in-One Design

### Compact Body

### Documents into Digital Files

### Quiet Operation

**Quietest Colour bizhub 47.6dB\***

\* When on standby. (Measured as indicated sound power level in accordance with ISO7779.)

### Energy Efficiency

■ Typical Electricity Consumption (TEC) Value

Device	TEC Value
Energy Star Standard	9,000
bizhub C200	3,600

# Make the most of your valuable time.

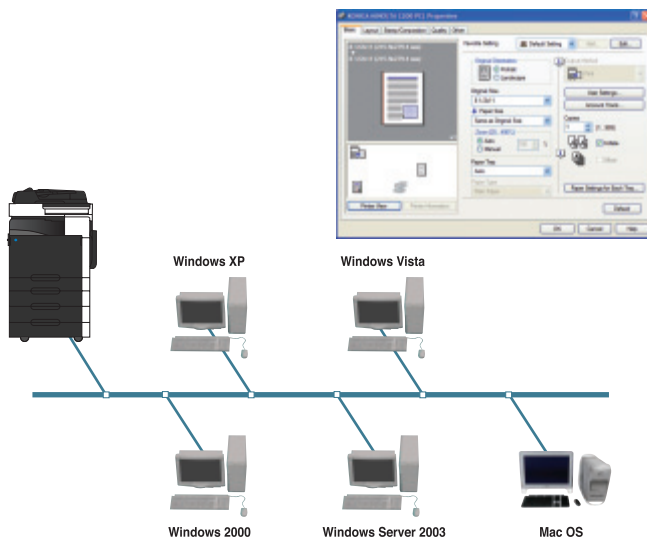
Whether you're working in black & white or in colour, printing, copying, scanning or faxing, the bizhub C200 helps you get your work done efficiently and creatively every time.

The C200 offers high-speed output, vivid colour and a host of other features and functions built to help you and your office improve its workflow productivity.

## High-Performance Emperon Print System

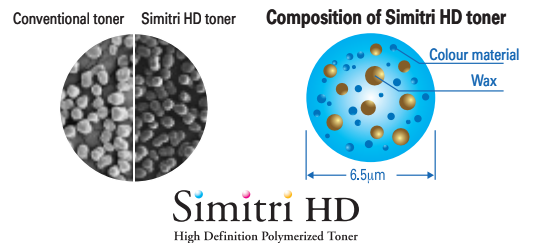


Standard on the C200, the Emperon Print System provides multi-OS support that can be utilised in a mixed network (Macintosh and Windows-based PCs) environment. The C200's Emperon also features standard PCL and PostScript drivers.

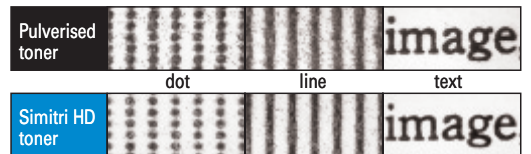


## High Image Quality

Due to a collection of technologies like our Simitri HD Toner, the C200 promises exceptional image quality. Simitri HD Toner is resistant to wear and tear thanks to its high fade resistance, matching that of professional printing ink. This makes documents suitable for long-term storage. Thanks to the toner's oil-less fixing, it is also easy to write on printed documents with a water-based pen or securely stick adhesive notes to them.



Comparison of pulverised toner and Simitri HD toner (internal test)



## Thick Paper Compatibility and Large Paper Capacity

The C200 accommodates thick paper up to 256g/m<sup>2</sup> in all of its trays. In terms of capacity, it holds up to 3,350 sheets of paper, including 100 sheets in its multiple bypass tray. And, it accommodates a wide range of paper sizes including paper from A3 wide to A6, as well as envelopes and labels.



## Tandem Engine

The C200 is equipped with the same type of tandem engine usually found in higher-end MFP models. This engine enables the C200 to achieve both high image quality and output speeds of 20 pages per minute in either black & white or colour.



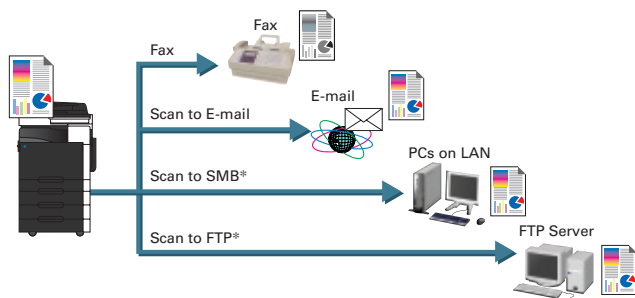


## Scanning

With the C200's scanner you have the ability to scan documents, convert them to digital data and then send them to a variety of destinations; these include Scan to E-mail, Scan to FTP\*, Scan to SMB\* and TWAIN scan\*.

### Multi-Method Send

Get more done in less time with Multi-Method Send. The C200's Multi-Method Send allows you to send data by fax and e-mail to multiple destinations with a single operation while simultaneously sending the data to SMB or FTP.

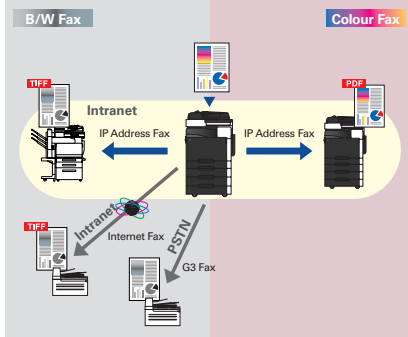


## Fax

The C200 boasts an optional fax with features that utilise network infrastructure—Internet and intranets—to move information faster and to provide cost reductions. Besides our G3 fax, this machine offers Internet Fax, Colour IP Address Fax\* and PC Fax functions.

### IP Address Fax

Seldom seen in an MFP in this class, the C200's IP Address Fax allows you to cost-effectively send a colour\* fax to any bizhub on the network that supports IP Address Fax simply by selecting an IP address. Because this method uses existing network systems, no additional costs are associated with it.



### Automatic Switching

Should a transmission error occur while sending an IP Address Fax or Internet Fax, the C200 automatically switches the destination to a pre-registered G3 fax number, ensuring the certainty of your transmission.



## Security and Management

The bizhub C200's security and management features were developed to help you maintain your company's bottom line. bizhub's department management function offers the security of departmental authentication, and allows the administrator to restrict functions\* such as colour output, which keeps overall bizhub utilisation costs under control.

## Universal Design

Designed to accommodate anyone regardless of age, gender, body size or disability, the C200 features a vertically tilting control panel with improved tilt mechanism, easy-grip paper trays and front access to toner and paper. The "start" button also has an easy-to-see blue LED light.



Optional Assist Handle for those with disabilities



No-grip tilting control panel



Convenient front access



Large, easy-grip paper trays

\*Available soon. Consult your sales representative for release dates.

**bizhub C200 Functions**

**Copy Functions**

- Text, Photo, Text/Photo, Map, Dot Matrix modes
- Single colour copy (21 colours)
- Auto density adjustment (for background only)
- Auto paper selection
- Auto zoom selection
- Mixed originals
- Image rotation
- Program registration (up to 10)
- Neg./pos. reverse
- Frame erase\*
- Horizontal/vertical individual zoom settings
- 2-in-1/4-in-1 copy
- Book copying (division/binding position/erase\*)
- Interrupt mode
- Slightly reduced copy
- Margin setting (position/size)\*
- Program job
- Crisscross sorting

**Print Functions**

- Document, Photo, DTP/Web, CAD modes
- Poster mode
- N-in-1, N x N (2/4/6/9/16 in 1, 2x2, 3x3, 4x4)
- Multiple protocol compatibility: RAW, LPD/LPR (AppleTalk\*), IPP\*, NetWare\*, SMB\*)
- Chapter breaks (Optional\*)
- Stamp (Watermark)
- Overlay
- Cover sheet\*
- Page by page setting\*
- 180° rotation
- Blank page control (PCL only)
- Margin setting (position/size)
- Print status notification (Software required)\*
- Batch print (Optional)
- TIFF Direct Print (Software required)\*
- PDF Direct Print (Software and option required)\*

**Copy/Print Functions**

- Multi-job
- Duplex copy/print (Optional)
- Enlarge/reduce/zoom
- Glossy mode copy/print
- 2-colour copy/print (PCL only)
- Grouping
- Shift sorting (Optional)
- Auto tray switch

**Scanning Functions**

- One-scan ACS/mixed original scanning
- Multi-Method Send
- Scan to E-mail
- E-mail subject/E-mail body text (administrator mode)
- Scan to SMB\*
- Scan to FTP\*
- E-mail notification of Scan to SMB/FTP URL\*
- TWAIN Scan\*
- Raw mode is optional
- File conversion (TIFF/PDF/JPEG)
- Single or multiple file saving

**Fax Functions (Optional)**

- G3 Fax
- Text, Photo, Text/Photo, Dot Matrix, Map modes
- 600 dpi fax (Not available with G3 Fax)
- Fax Multi Line
- Rotation transmission/reception
- 2-in-1 transmission
- 2-sided transmission
- Memory transmission
- Quick scan transmission
- Priority transmission
- Timer transmission
- Remote copy
- Remote output
- Memory RX (print as needed)
- Memory reception (save when printing fails)
- Fax forwarding
- Bulletin setting
- Polling transmission/reception
- Broadcast transmission
- Fcode
- ECM OFF (Service rep setting)
- V.34 OFF (Service rep setting)
- Overseas transmission
- Transmission report
- Stamp/composition (Watermark)
- Scanned stamp
- Internet Fax
- Internet Fax result notification
- PC Fax
- N-in-1, N x N (PC Fax)
- Cover sheet (PC Fax)
- IP Address Fax (Colour IP Address Fax\*)
- IP/G3 Fax automatic switching
- IP relay distribution
- SIP Fax\*

**Scanning/Fax Functions (Optional)**

- One-touch registration (up to 300)
- Program transmission (up to 30)
- LDAP search\*

**Security & Management Functions**

- Department management (up to 50 depts) (Function restrictions\* (copy/print/data transmission))
- Secure Print (Win/Mac OS X only) (Optional)
- Secure Print result notification (Optional\*)
- Scan to E-mail SMTP authentication, POP3 before SMTP
- Confidential fax transmission/reception (Optional)
- Password fax transmission/reception (Optional)
- Automatic fax destination verification and transmission (CSI: Called Subscriber ID) (Optional)

\*Available soon. Consult your sales representative for release dates.

**Specifications**

**bizhub C200**

Type	Desktop Full-Colour Copier/Printer/Scanner	
Colour Support	Full Colour	
	Scan	Main: 600dpi x Sub: 600dpi
Copy Resolution	Scan	Main: 600dpi x Sub: 600dpi
	Print	256
Gradation	576MB/1,088MB	
Memory Capacity (Std./Max.)	Not Available	
Original Type	Sheets, Books, Objects	
Max. Original Size	A3 (11" x 17")	
Output Size	A3-A5, B6 Lengthwise, A3 Wide (12" x 18"), A6 Lengthwise Thick Paper	
Image Loss	Max. 4.2mm for top edge, Max. 3mm for bottom/right/left edges	
Warm-Up Time (time from when sub-power is turned on)	Colour	40 sec. or less (23°C, std. Voltage)
	B&W	37 sec. or less
First Copy Time (23°C, std. voltage)	Colour	13.5 sec. or less
	B&W	10 sec. or less
Copy Speed (A4 Crosswise)	Colour	20 pages/min
	B&W	20 pages/min
Copy Magnification	Fixed Same Magnification	1:1 ± 0.5% or less
	Scaling Up	1:1, 1.54/1.224/1.414/2.000
	Scaling Down	1:0.866/0.816/0.707/0.500
	Preset	3 types
	Zoom	25-400% (in 0.1% increments)
	Lengthwise Crosswise Individual Settings	25-400% (in 0.1% increments)
	Paper Capacity (80g/m <sup>2</sup> paper)	Standard
Paper Weight	Universal Cassette	60-256g/m <sup>2</sup>
	Multi Bypass Tray	60-256g/m <sup>2</sup>
Multiple Copy	1-999 sheets	
Power Requirements	AC220-240V 8A (50/60Hz)	
Max. Power Consumption	1.5kW or less	
Dimensions [W] x [D] x [H]	620mm x 688mm x 648mm (24-1/2" x 27 x 25-1/2")	
Weight	Approx. 68kg (150lb) excluding I/UTC	
Space Requirements [W] x [D] (Standard system)	620mm x 688mm (24-1/2" x 27")	

**Controller**

Type	Internal Type	
CPU	Power PC 440EP 667Hz	
Memory	Shared with copier	
Print Speed	Same as Copy Speed (when using the same original)	
HDD	Not available	
Print Resolution	Main: 600dpi x Sub: 600dpi	
PDL	PCL5e/c, Emulation, PCL XL ver.3.0 Emulation, PostScript 3 Emulation (3016)	
Protocol	TCP/IP, LPD, IPX/SPX (NDS supported)*, SMB (NetBEUI), IPP1.0*, EtherTalk*	
Support OS	Server	Windows 2000/Server 2003/Server 2003 x64 Edition
	Client	Windows 2000/XP/Vista/XP x64 Edition/Vista x64 Edition/MacOS 9.2 or later/MacOS X ver.10.2 or later/Mac Intel OS X 10.4 or later
Font	PCL	4 Japanese fonts (HG mincho L/HGP mincho L/HG Gothic B/HGP Gothic B), 80 European fonts
	PS	2 Japanese fonts (HG mincho L/HG Gothic B), 137 European type1 fonts
Interface	10BASE-T/100BASE-TX, USB 1.1/2.0	

**Scanning Function**

Type	Full-Colour Scanner	
Interface	Ethernet (10BASE-T/100BASE-TX)	
Driver	TWAIN Driver	
Protocol	TCP/IP (SMTP, FTP*, SMB*)	
Scanning Speed (A4 Crosswise)	Colour / B&W	20/40 pages/min (300dpi)
Scanning Size	Max. A3	
Output Format	TIFF (#2 standard, No colour TIFF), PDF (V1.3 standard), JPEG	
Scanning Resolution	Push	200/300/400/600dpi
	Pull (only TWAIN* scan)	100/200/300/400/600dpi
Main Functions	Scan to E-Mail, Scan to FTP*, Scan to PC (SMB)* (Network TWAIN (via Ethernet TCP/IP))	
Other Functions	Multi-Method Send, Authentication for e-mail sending	

**IP Address Fax Function**

(Optional Fax Kit FK-507 is required. Optional Mount Kit MK-714 and Expanded Memory Unit EM-310 are required for colour fax mode.\*)

Protocol/Transmission	SMTP, TCP/IP
Encoding System	MH, MR, MMR, JPEG (Colour*)
Sending Paper Size	Max. A3
Recording Paper Size	Flatbed Scan: Max. A3 Automatic Document Feeder Scan: B&W: Max. 297 x 1,000mm Colour*: 297 x 1,000mm (less than 400dpi), Max. 297 x 432mm (600dpi)
Scanning Speed (A4 Crosswise)	B&W 200dpi: 40ppm
Interface	Ethernet (10BASE-T/100BASE-TX)
Resolution	200/300/400/600dpi

\*Available soon. Consult your sales representative for release dates.

**Product appearance, configuration and/or specifications are subject to change without notice.**

The Konica Minolta logo and the symbol mark, and "The essentials of imaging" are registered trademarks or trademarks of Konica Minolta Holdings, Inc.

bizhub, PageScope, Simitri and the Emperon logo are registered trademarks or trademarks of KONICA MINOLTA BUSINESS TECHNOLOGIES, INC.

Windows is a registered trademark of Microsoft Corporation in the United States and other countries.

Adobe and PostScript are registered trademarks or trademarks of Adobe Systems Incorporated.

All other brand and product names are registered trademarks or trademarks of their respective owners.

**Konica Minolta copiers and multi-functional peripherals are designed with the environment in mind.**

- Have Earned ENERGY STAR for Energy Efficiency
- The Use of Recycled Materials
- Production at ISO-Certified Factories

These products have earned the ENERGY STAR for energy efficiency. ENERGY STAR is a U.S. registered mark.

**Requirements for safe use**

- Please read and follow the instruction manual to ensure safe operation.
- Only operate using appropriate power supply and voltage.
- Connecting the earth wire to an inappropriate place may cause explosion or electric shock. Please connect accordingly (Taiwan and the Philippines only).

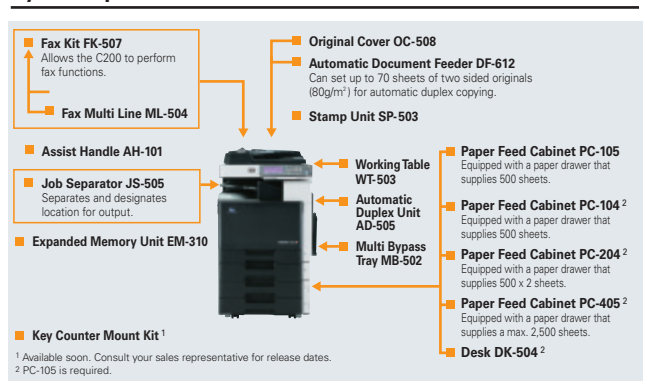
**KONICA MINOLTA  
BUSINESS TECHNOLOGIES, INC.**  
1-6-1 Marunouchi Chiyoda-ku, Tokyo, Japan  
http://www.biz.konicaminolta.com

**Fax Function**

(Optional Fax Kit FK-507 is required.)

Communication	ECM/G3
Compatible Lines	PSTN, PBX
Line Density	G3: 8 dot/mm x 3.85 line/mm to 400x400dpi
Modem Speed	2.4kbps-33.6kbps
Compression	MH/MR/MMR/JBIG
Sending Paper Size	Flatbed Scan: Max. A3 (Long Length Max.1,000mm) Automatic Document Feeder Scan: Max. 297x1,000mm (Simple), Max. 297x432mm (Duplex)
Recording Paper Size	Max. A3 (Long Length Record Max.1,000mm - following the page division)
Transmission Speed	Less than 3 sec. (A4, V.34, 33.6kbps, JBIG)
Scanning Speed (A4 Crosswise)	B&W Fine Mode: 40ppm
Memory	Shared with copier
Number of Abbr. Dials	300
Number of Program Dials	30
Number of Group Dials	30
Sequential Multiple Station Transmission	Max. 210

**System Options**



**Required Options**

	Fax Kit FK-507	Fax Multi Line ML-504	Mount Kit MK-714 <256MB>	Expanded Memory Unit EM-310 <512MB>	SIP Adaptor (NEC)	Automatic Duplex Unit AD-505	Job Separator JS-505
G3 Fax	✓						
Fax Multi Line	✓	✓					
PC Fax	✓						
Internet Fax	✓						
IP Address Fax	B&W	✓	✓	✓			
IP relay distribution	Colour*	✓	✓	✓			
IP/G3 fax automatic switching	✓		✓	✓			
SIP Fax*	B&W	✓			✓		
Duplex copy/print	Colour	✓	✓	✓	✓		
Shift sorting (Copy/Print)							✓
Chapter breaks (PC printing)*				✓			
Page by page setting (PC printing)*				✓			
Secure Print				✓			
PDF Direct Print*			✓				
Batch print (PC printing)				✓			
Continuous reception (PC printing)				✓			
TWAIN Scan Raw mode				✓			

\*Available soon. Consult your sales representative for release dates.



This catalogue was printed using soy ink.